

---

# DRONE OPERATION COURSE FOR CARGO AND PEOPLE TRANSPORT





# PRACTICAL PLANNING EXERCISE



# SCENARIO

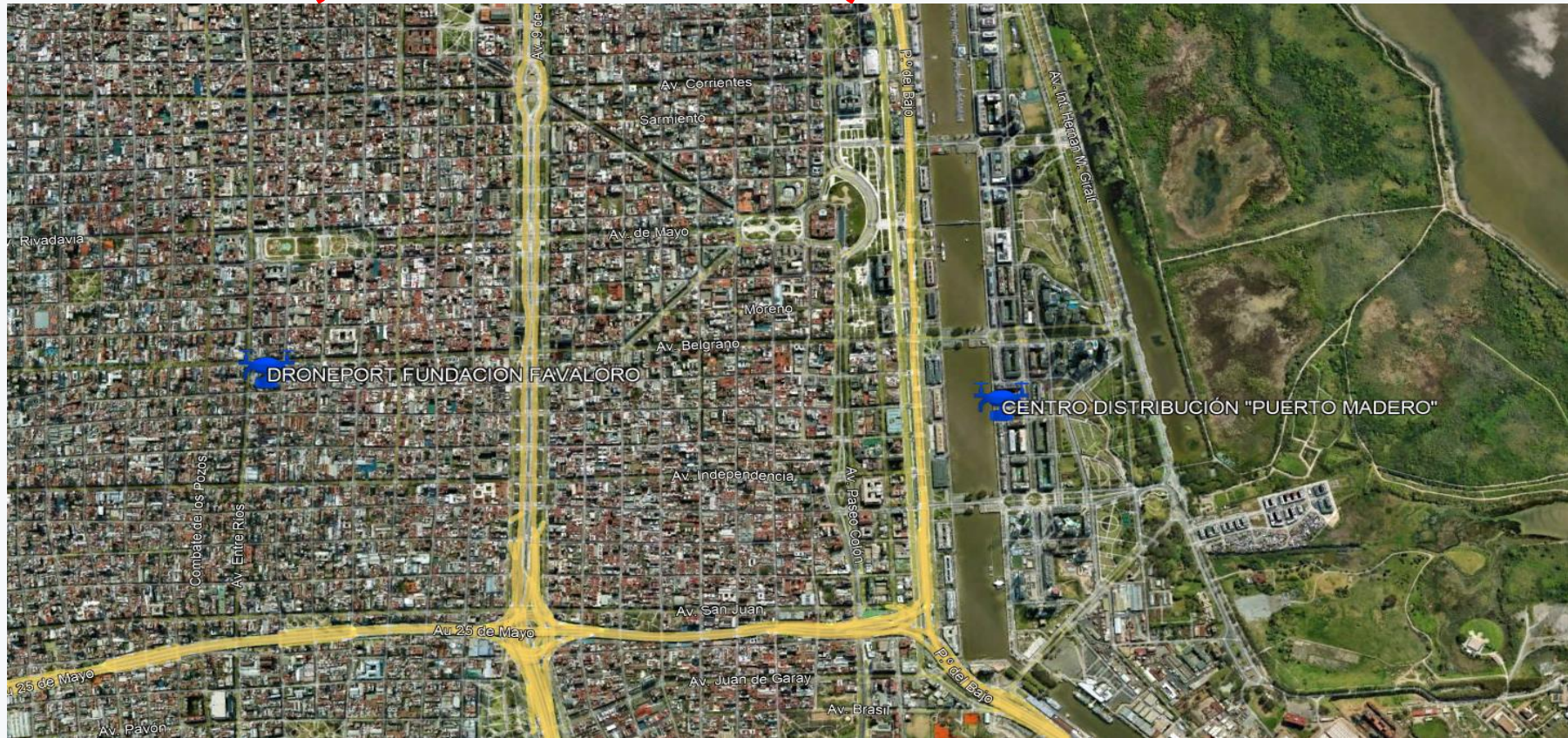
*You are the head of operations of "DRONES TRANSPORTE VIP", a company specialized in urgent deliveries using cargo drones in Buenos Aires. You have been tasked with planning a critical delivery mission using the SpeedBird Aero DLV-1 with the following features:*



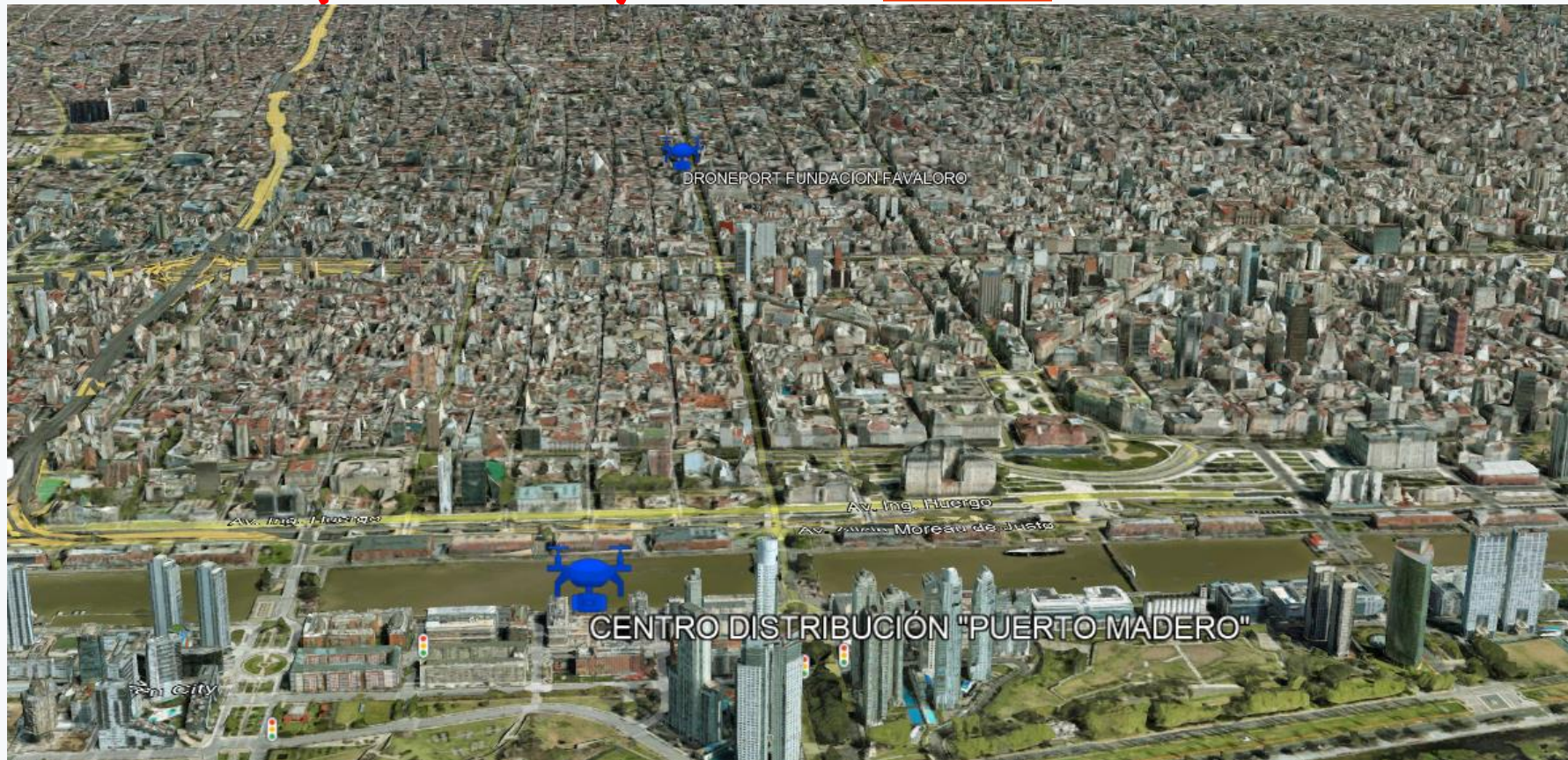
- ✓ **MISSION:** Urgent delivery of medical supplies.
- ✓ **ORIGIN:** Distribution center in Puerto Madero – Juana Manso 1151, Autonomous City of Buenos Aires - (Coordinates: 34°36'51.52"S - 58°21'47.54"W).
- ✓ **DESTINY:** Fundación Favaloro Buenos Aires – Avenida Belgrano 1746, Ciudad Autónoma de Buenos Aires - (Coordinates: 34°36'50.57"S, 58°23'27.58"O).
- ✓ **APPROXIMATE LINEAR DISTANCE:** 2.6 km
- ✓ **MISSION TIME:** 10:00 a.m. (local time)
- ✓ **WEATHER CONDITIONS:** Clear skies, easterly winds at 12 kts (22.2 km/h), occasional gusts of 18 kts (33.3 km/h), temperature of 24°C



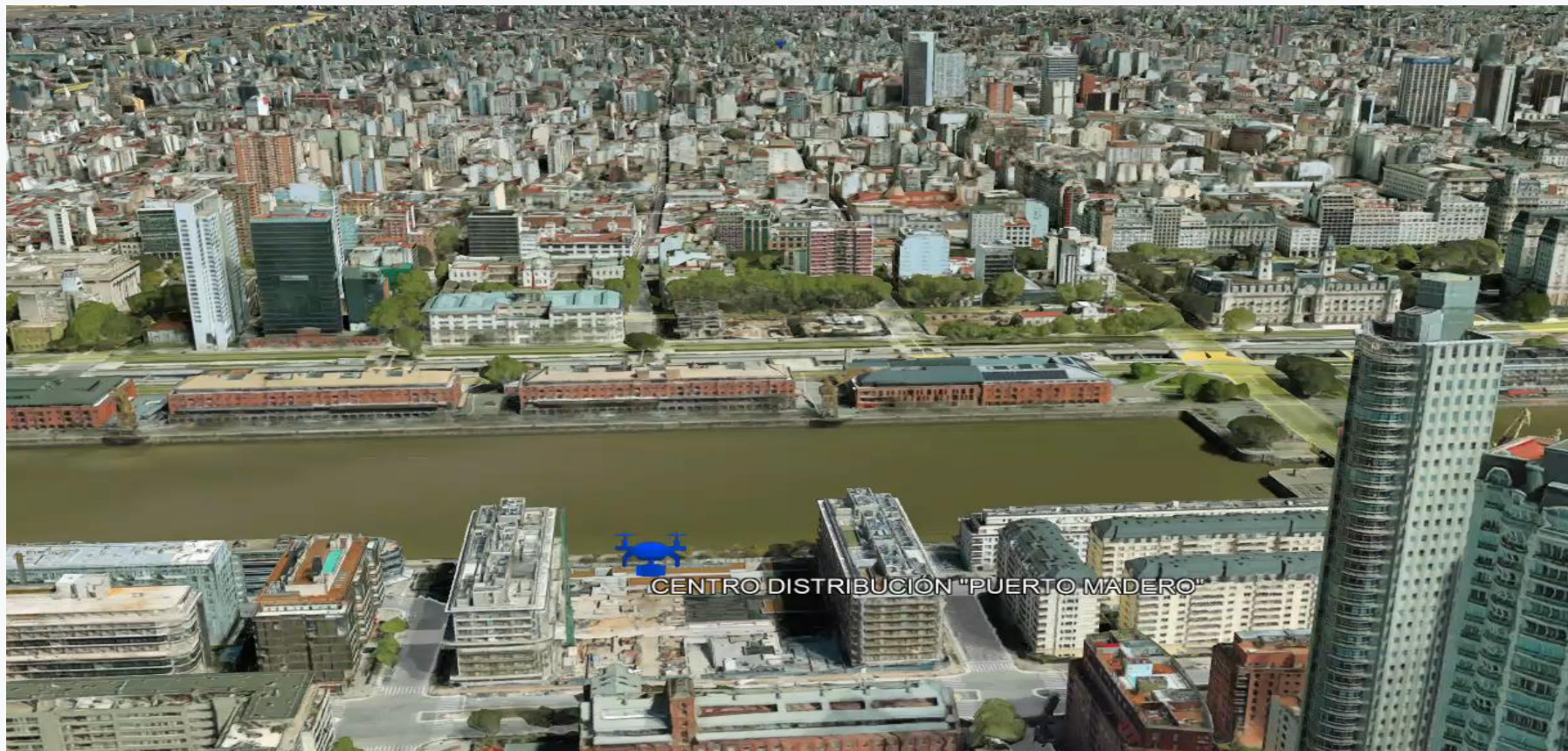
# MISSION (ZENITHAL VIEW)



# MISSION (3D VIEW)

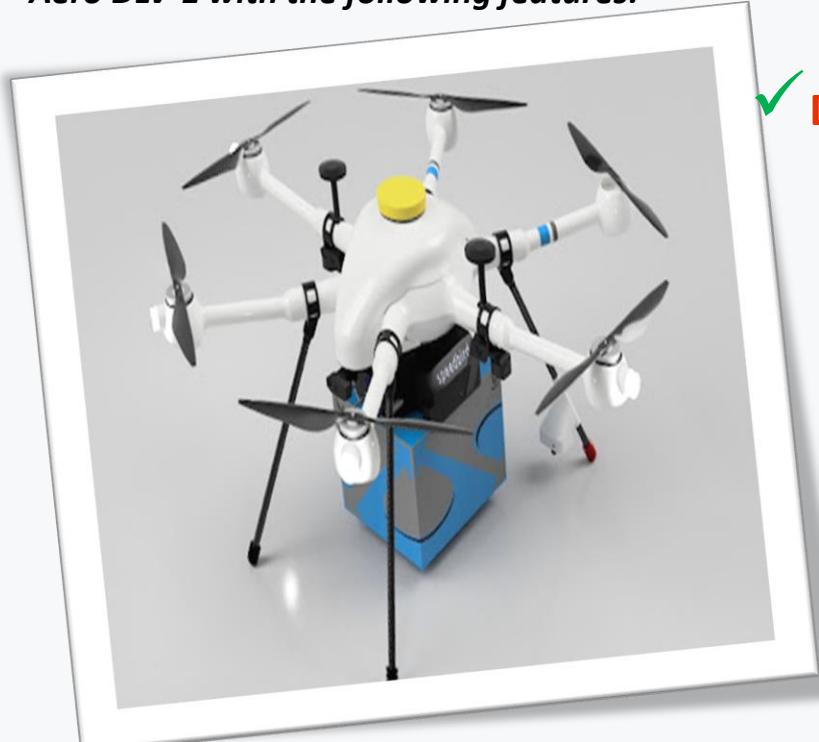


# MISSION (3D VIEW - DYNAMIC)



# SCENARIO

*You are the head of operations of "DRONES TRANSPORTE VIP", a company specialized in urgent deliveries using cargo drones in Buenos Aires. You have been tasked with planning a critical delivery mission using the SpeedBird Aero DLV-1 with the following features:*



## DRON: SPEEDBIRD AERO DLV-1

- ❖ Maximum wind for operation: 16 kts (29.6 km/h)
- ❖ Gust limit: 25 kts (46.3 km/h)
- ❖ Maximum take-off weight: 13.25 kg
- ❖ Empty weight: 10.75 kg
- ❖ Maximum Loading Weight: 2.5 kg
- ❖ Cruising speed: 50 km/h
- ❖ Maximum range: 8 km in one direction, 4 km in two directions



# EXERCISE

---

*Using the information provided and the "CHECKLIST GUIDE FOR PLANNING AND EXECUTION OF TRANSPORT DRONE MISSIONS", develop a detailed flight plan that addresses the following aspects:*

1. Initial assessment and risk analysis
2. Route planning, considering airspace and obstacles in Buenos Aires
3. Population density analysis and necessary route adjustments
4. Communications and redundancy plan
5. Specific considerations of the urban environment of Buenos Aires
6. Emergency Procedures
7. Regulatory compliance and documentation required by regulations



*Present your plan in the form of a report, justifying each decision based on the information provided in the reference documents and the specific characteristics of Buenos Aires and the SpeedBird Aero DLV-1.*



# **DRONES**VIP

## **QUESTION TIME!**

---

